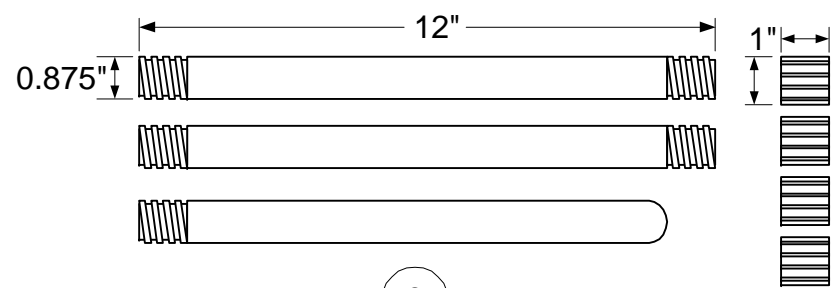


↓
BEAM DIRECTION

NOTE: CIRCLED NUMBERS REFER TO BILL OF MATERIAL ITEMS

DESIGN: A.W. BAKER	09/23/02
TESTED: A.W. BAKER	09/28/02

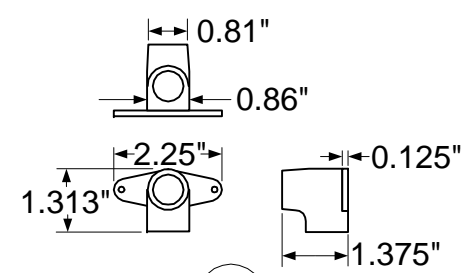
KG4JJH		
BLACK WIDOW PORTABLE 15 METER BEAM ASSEMBLY		
SCALE: 1/16:1	SHEET 1 OF 4	REV. 0



9

SPREADER

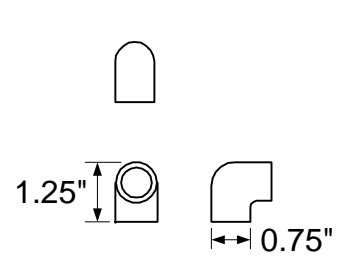
MAT'L: THREE PIECE EXTENSION POLE KIT
 MODIFICATIONS: CUT 2 SOCKETS IN HALF
 REQ'D: 2 EACH



13

FEEDPOINT

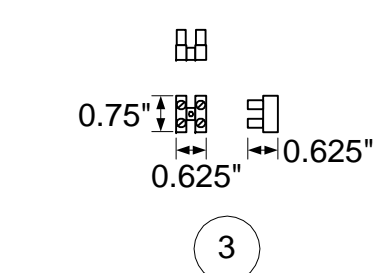
MAT'L: CPVC DROP EAR 90°
 ELBOW
 REQ'D: 1 EACH



14

FEEDPOINT

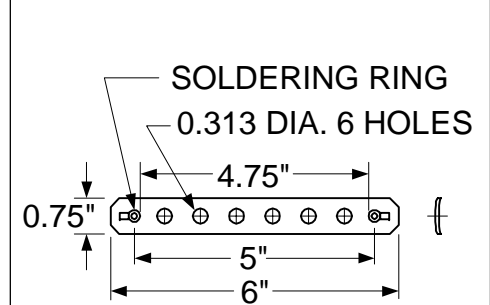
MAT'L: CPVC 90° ELBOW
 REQ'D: 1 EACH



3

FEEDPOINT

MAT'L: TERMINAL STRIP
 MODIFICATIONS: REMOVE 6
 TERMINALS
 REQ'D: 1 EACH

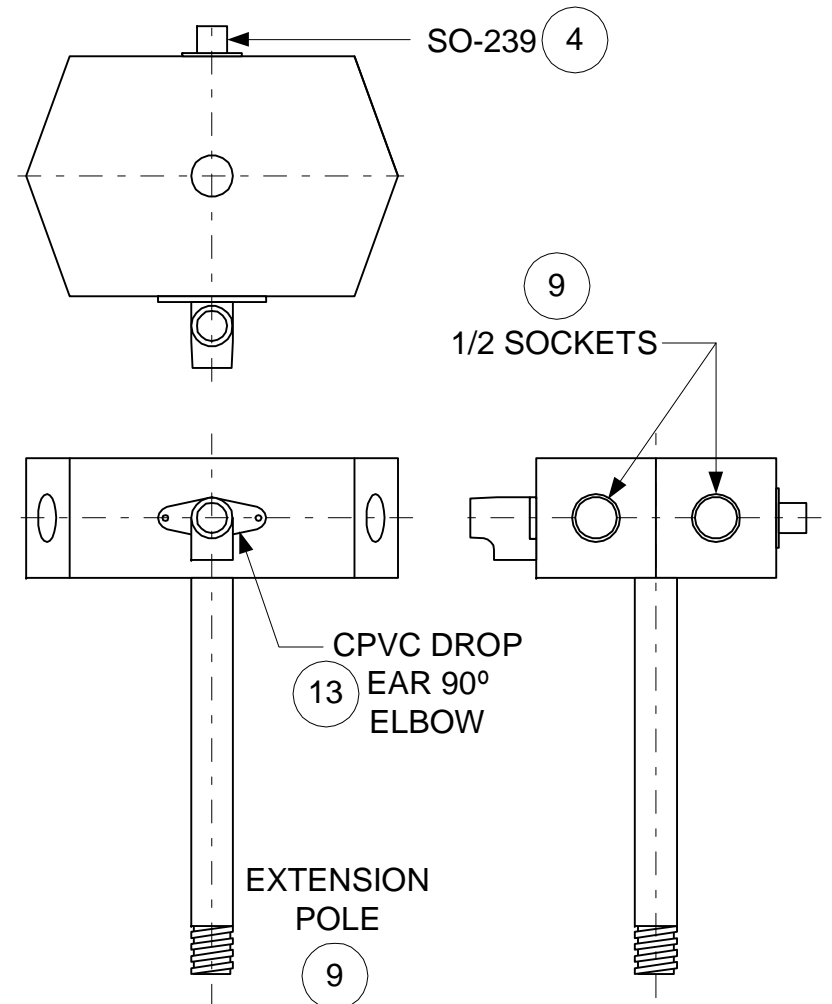


SOLDERING RING

0.313 DIA. 6 HOLES

INSULATOR

MAT'L: PVC PIPE SCRAP
 REQ'D: 2 EACH



SO-239 4

9

1/2 SOCKETS

CPVC DROP
 EAR 90°
 ELBOW

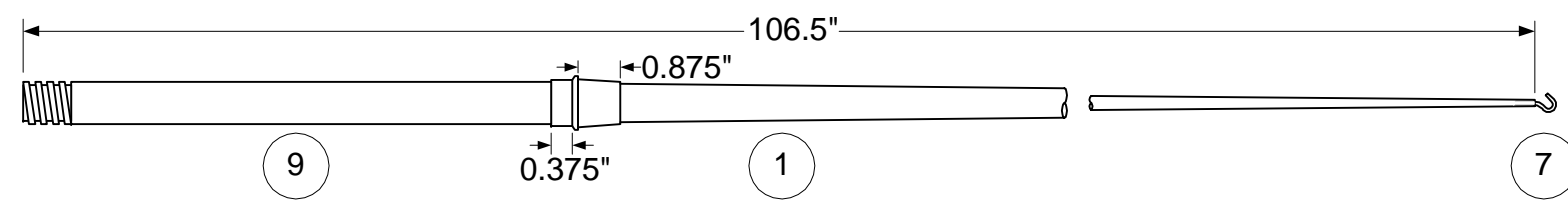
13

EXTENSION
 POLE

9

HUB ASSEMBLY

REQ'D: 1 EACH



9

1

7

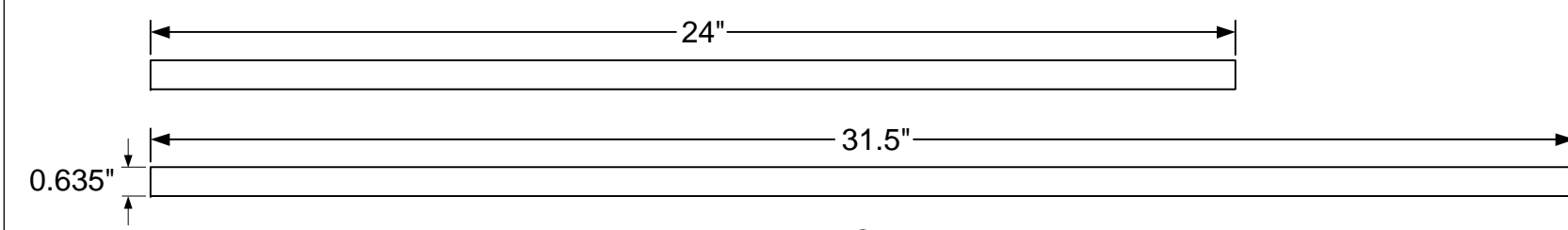
SPREADER

MATERIALS: EXTENSION POLE, 3-SECTION FISHING ROD, SCREW HOOK
 MODIFICATIONS: EPOXY EXT. POLE INTO HANDLE, CUT POLE TIP, EPOXY SCREW HOOK IN END
 REQ'D: 4 EACH

SECTION 1: 43.375"
 START OD = 0.780"
 END OD = 0.650"

SECTION 2: 37"
 START OD = 0.560"
 END OD = 0.323"

SECTION 3: 13.875"
 START OD = 0.266"
 END OD = 0.205"



12

FEEDPOINT

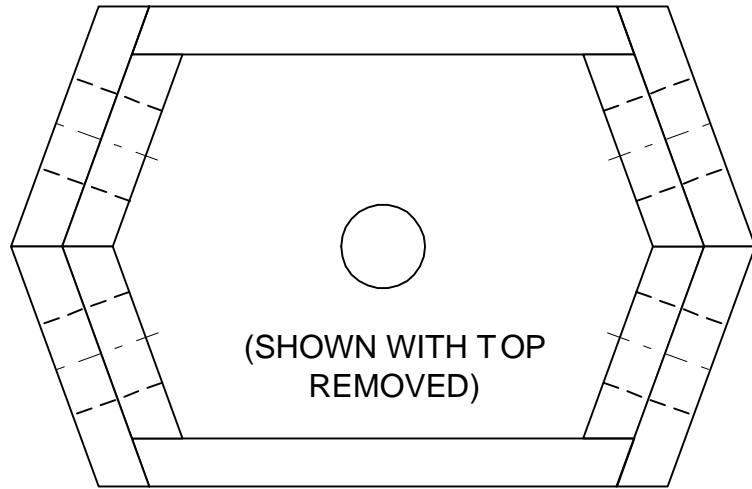
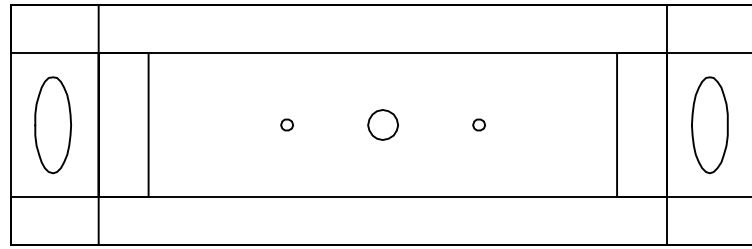
MATERIAL: CPVC 1/2" PIPE
 MODIFICATIONS: CUT TO FIT (SEE TEXT)
 REQ'D: 1 EACH

NOTE: CIRCLED NUMBERS REFER TO BILL OF MATERIAL ITEMS

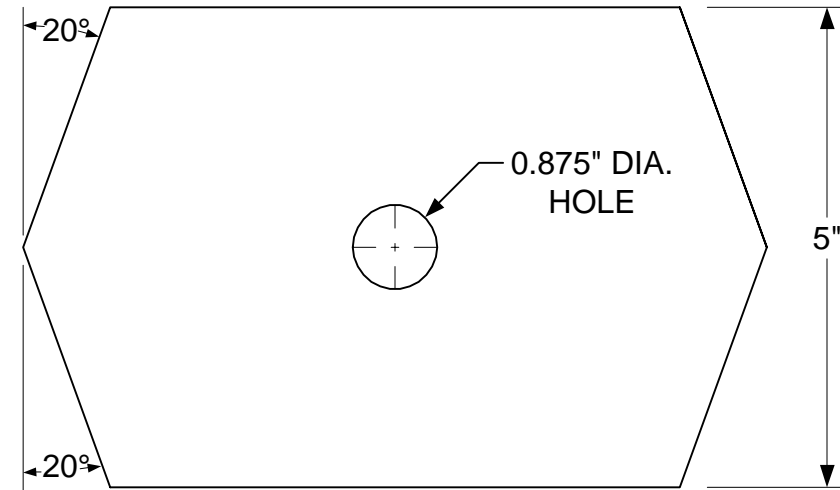
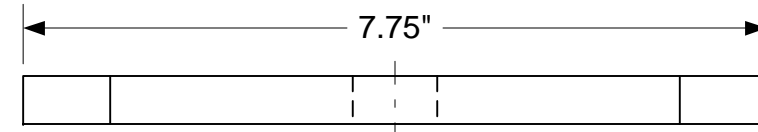
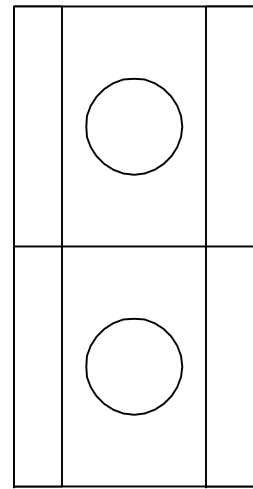
DESIGN: A.W. BAKER	09/23/02
TESTED: A.W. BAKER	09/28/02



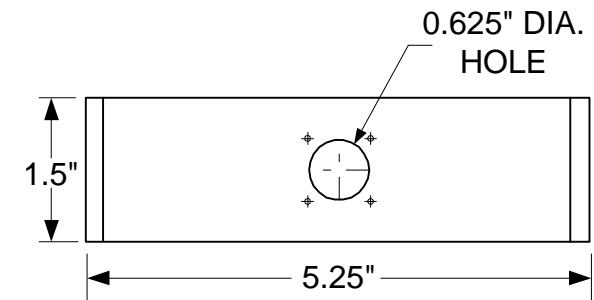
**BLACK WIDOW
 PORTABLE 15 METER BEAM
 DETAILS**



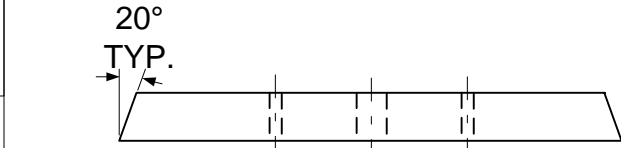
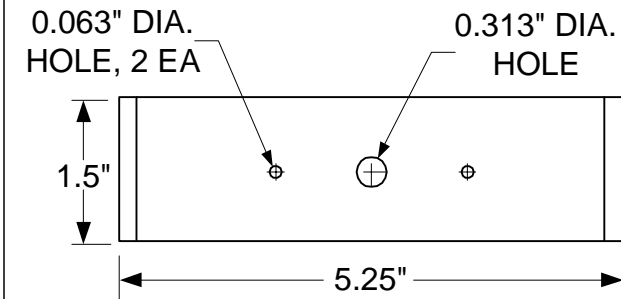
HUB ASSEMBLY
MATERIAL: 1/2" POPLAR
REQ'D: 1 EACH



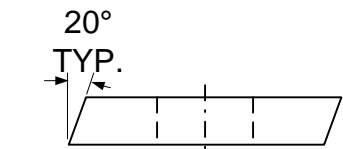
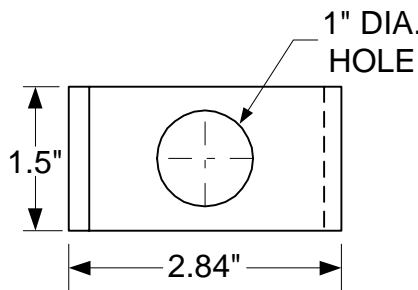
HUB TOP/BOTTOM
MATERIAL: 1/2" POPLAR
REQ'D: 2 EACH



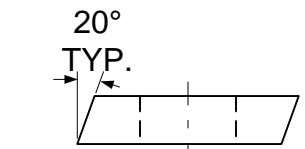
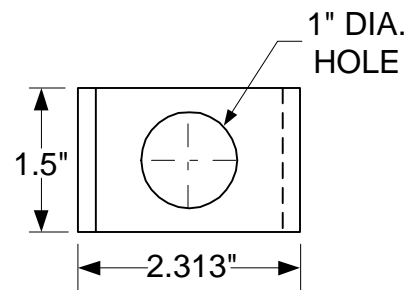
HUB BACK
MATERIAL: 1/2" POPLAR
REQ'D: 1 EACH



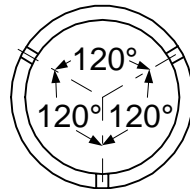
HUB FRONT
MATERIAL: 1/2" POPLAR
REQ'D: 1 EACH



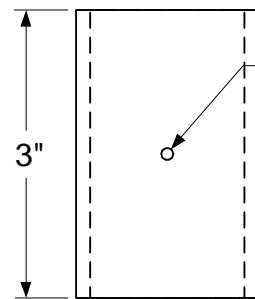
HUB SIDE
MATERIAL: 1/2" POPLAR
REQ'D: 4 EACH



HUB SIDE DOUBLER
MATERIAL: 1/2" POPLAR
REQ'D: 4 EACH



OD = 1.90"
ID = 1.61



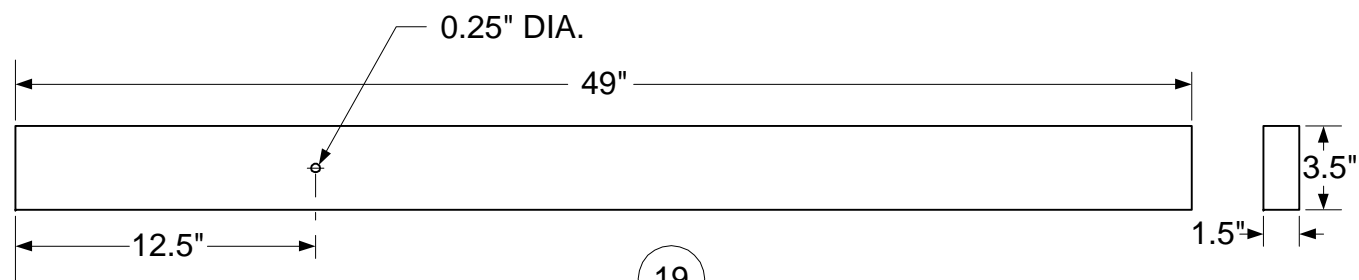
MAST GUYING RING
MATERIAL: 1.5" PVC COUPLING
REQ'D: 1 EACH

DESIGN: A.W. BAKER	09/23/02
TESTED: A.W. BAKER	09/28/02



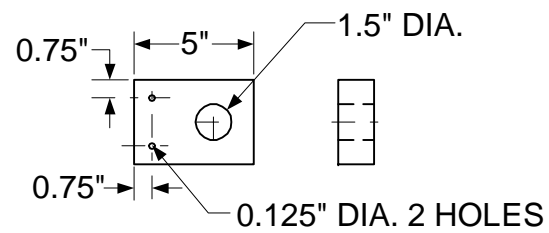
**BLACK WIDOW
PORTABLE 15 METER BEAM
HUB DETAILS**

NOTE: CIRCLED NUMBERS REFER TO BILL OF MATERIAL ITEMS



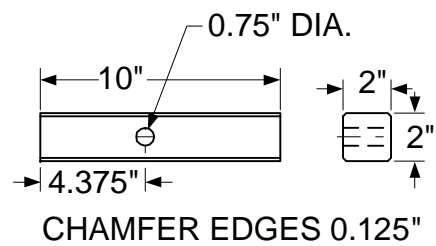
19

TRAILER HITCH MAST SUPPORT
 MAT'L: 2" X 4" PINE
 REQ'D: 1 EACH

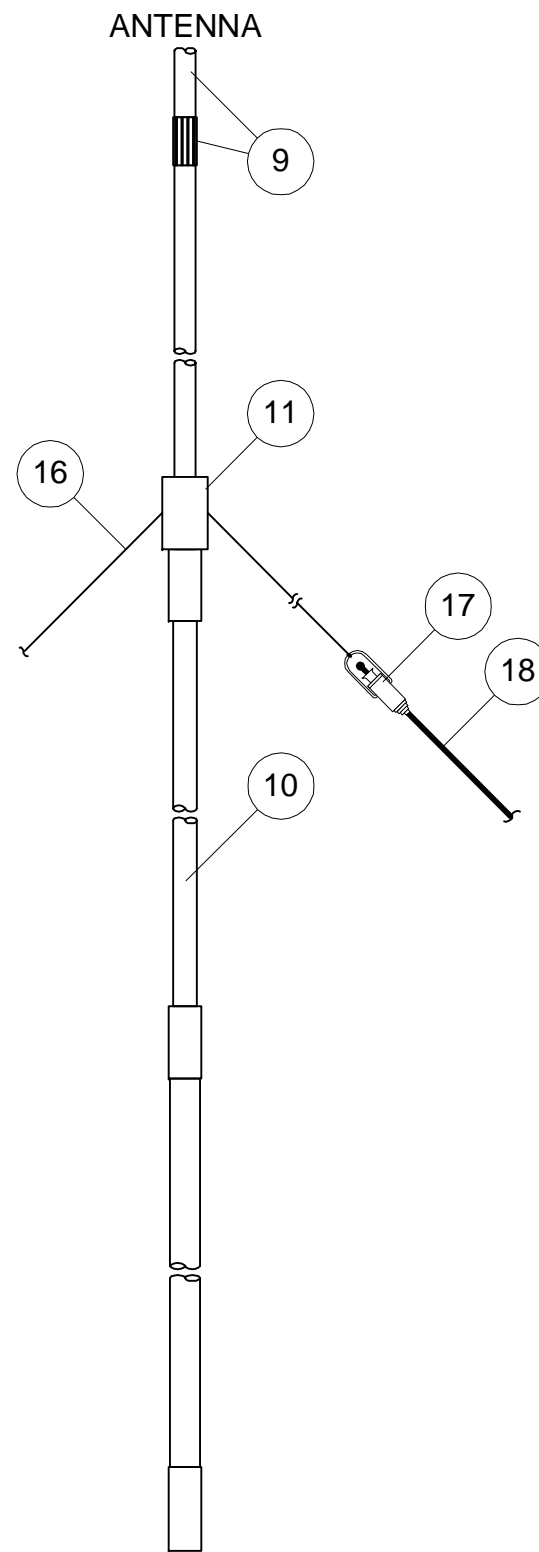


19

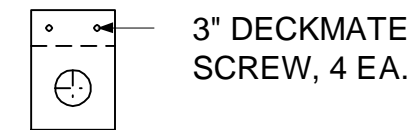
TRAILER HITCH MAST SUPPORT
 MAT'L: 2" X 4" PINE
 REQ'D: 2 EACH



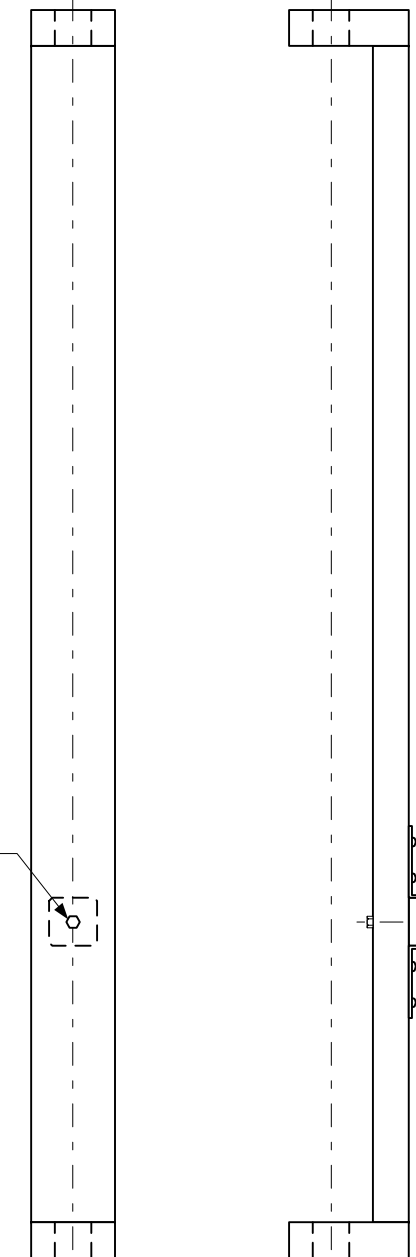
TRAILER HITCH MAST SUPPORT
 MAT'L: GLUED-UP 1/8" LITE-PLY
 OR 1/2" PLYWOOD
 REQ'D: 1 EACH



MAST ASSEMBLY



3" DECKMATE
 SCREW, 4 EA.



20

3" X 3" X 0.75"
 ANGLE BRACKETS
 WITH SCREWS

**TRAILER HITCH MAST SUPPORT
 ASSEMBLY**

NOTE: CIRCLED NUMBERS REFER TO BILL OF MATERIAL ITEMS

DESIGN: A.W. BAKER	09/23/02
TESTED: A.W. BAKER	09/28/02



**BLACK WIDOW
 PORTABLE 15 METER BEAM
 MAST SUPPORT**